

DESIGNS
FOR VISION



The First
Wearable
in Surgery



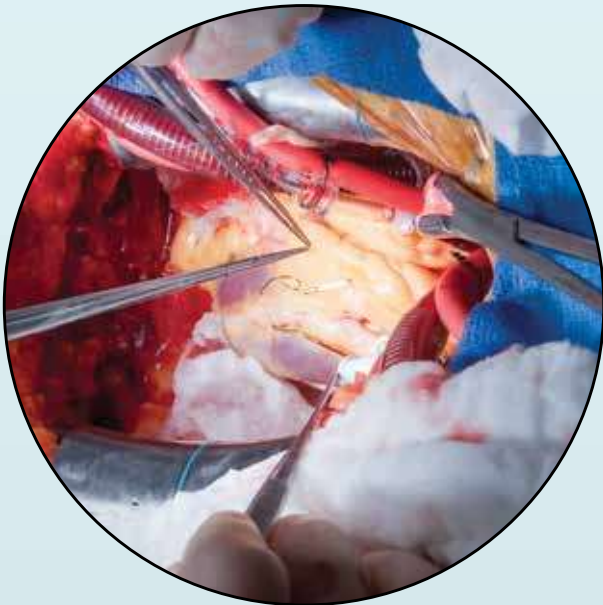
Double **Your Viewable Field**



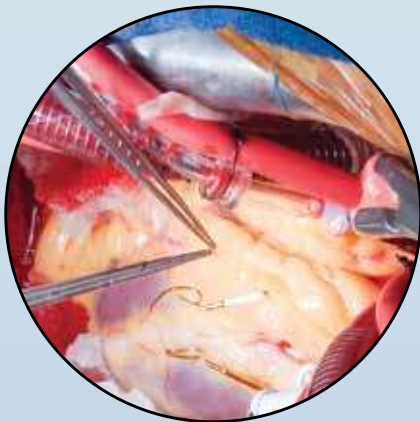
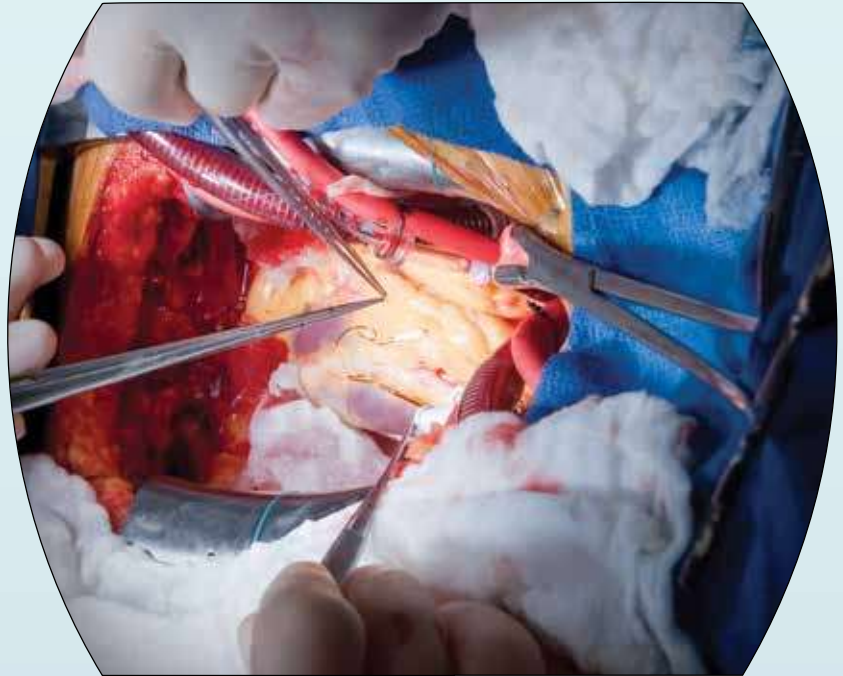
Viewing Field
18" working distance

Expanded Field Loupes

Panoramic Loupes



3.5x



4.5x

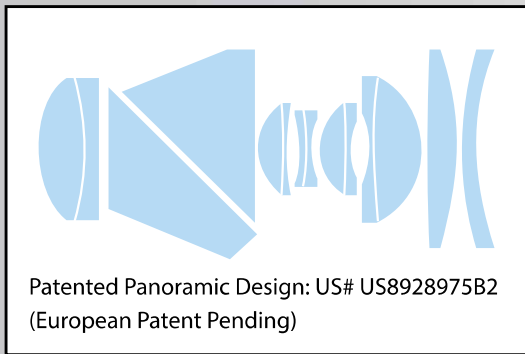


Panoramic Loupes

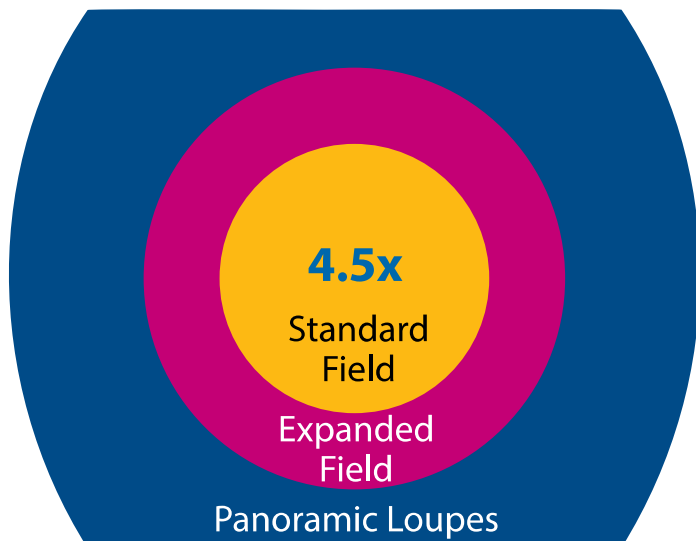
The first advancement in telescopic optics in 100 years



See the bigger picture with the new patented panoramic field design, doubling the viewable area over prismatic expanded field optics. Designs for Vision's new panoramic loupes provide precision magnification with an unprecedented field of view.



Loupes	3.0x Micro-EF	NEW 3.0x Panoramic Field*	3.5x Expanded Field	3.5x Panoramic Field	4.5x Expanded Field	4.5x Panoramic Field	6.0x Expanded Field	6.0x Panoramic Field
Viewable Area	78 cm ²	143 cm ²	50 cm ²	100 cm ²	24 cm ²	65 cm ²	12.5 cm ²	21 cm ²
Field Diameter	10 cm	13.5 cm	8 cm	11.1 x 9 cm	5.5 cm	9 x 7 cm	4 cm	6 x 3.5 cm
Angle of View	16°	21.5°	14°	20°	9°	16°	6.5°	9°



Panoramic Loupes DOUBLE the Viewable Area over **Prismatic Expanded Field** optics, and more than **QUADRUPLES** the viewable area over **Galilean Standard Field** optics

* SEE the **WIDEST FIELD EVER!**
NEW 3.0x Panoramic Loupes featured on back page 8

Classic **Surgi-Spec®** Loupes



Loupes	2.5x
Viewable Area	50 cm ²
Field Diameter	8 cm
Angle of View	14°



Loupes	3.0x
Viewable Area	38 cm ²
Field Diameter	7 cm
Angle of View	11°



Loupes	3.5x
Viewable Area	20 cm ²
Field Diameter	5 cm
Angle of View	8°



Expanded Field **High-Vision Loupes**



Loupes	3.5x-EF
Viewable Area	50 cm ²
Field Diameter	8 cm
Angle of View	14°



Loupes	4.5x-EF
Viewable Area	24 cm ²
Field Diameter	5.5 cm
Angle of View	9°



Loupes	6.0x-EF
Viewable Area	12.5 cm ²
Field Diameter	4 cm
Angle of View	6.5°



Lightweight **Micro-EF Scopes**

Prismatic Expanded Field Loupes

NEW 3.0EF

Loupes	Micro3.0EF
Viewable Area	78 cm ²
Field Diameter	10 cm
Angle of View	16°



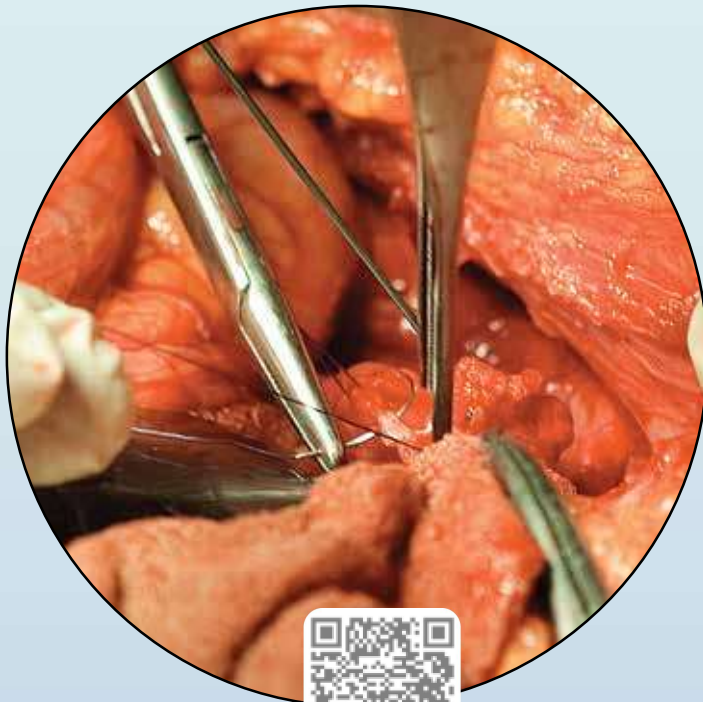
**50% Smaller
and
40% Lighter**

Loupes	Micro3.5EF
Viewable Area	44 cm ²
Field Diameter	7.5 cm
Angle of View	12°



**44% Smaller
and
44% Lighter**

Loupes	Micro4.5EF
Viewable Area	20 cm ²
Field Diameter	5 cm
Angle of View	8°



[Compare
Magnifications](#)



Combat Back & Neck Pain



Infinity VUE™ ↑ Vision Up Ergonomics

Introducing a straight-forward approach to ergonomics. Infinity VUE™ Loupes keep your chin up, your neck straight and your eyes looking forward while viewing the magnified surgical field.



- New Vision Up Ergonomics developed to help you maintain the best posture and **prevent back and neck pain**
- Available in 3.0x, 3.5x and 4.5x magnification
- Custom Built to your unique measurements
- 45 Day Free Trial



Infinity VUE™ 3.5x shown in NEW SteamVUE frame with LED DayLite® UltraMini HDi



4.5x Infinity VUE™ shown in NEW Stoggles Square Frame



Infinity VUE™ 3.0x shown in NEW SteamVUE frame



Document – Broadcast – Record with

LED NanoCam

Now
Available
for MACs!

DOCUMENT Easy to use, bluetooth enabled wireless footpedal for hands-free operation. Digitally insert HiDef video and images into patient record.

BROADCAST Transmit real time first person view.

RECORD Record Clinician's point of view – an invaluable tool for instruction.

Easy to use DBR software with true color rendition, HIPAA compliance and 24/7 support.



LED NanoCam 4K™

Lightweight 24g
4K, 1080P resolution
13 megapixels
Two Magifications:
16mm 2.0x and 25mm 3.0x
Superior Low-Light Performance
Windows and **MAC** compatible
Android Compatible at 1080p

LED NanoCam GO™

Lightest weight 16g
1080P, 720P resolution
3.4 megapixels
Two Magifications:
16mm 2.0x and 25mm 3.0x
Windows and **MAC** Compatible
Android Compatible for mobile
or rapid sharing applications

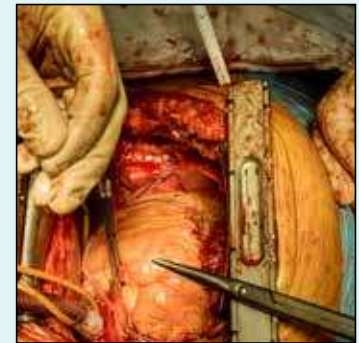


Learn More

*New camera sensor reduces auto exposure and blooming
in bright light, providing excellent recording/photo ability*



SEE Every Detail
with the
**WIDEST
FIELD
EVER**



← 135 mm field →
Unmagnified

Can you see this entire circle
through your loupes?
If not, contact us for a **45 Day FREE trial!**

NEW 3.0x Panoramic Loupes

- Lightweight & Comfortable
- Unprecedented **135 mm** field of view
- Revolutionary Panoramic Optics
Double Your Field of View



Designs for Vision, Inc.

4000 Veterans Memorial Hwy. • Bohemia, NY 11716-1024 • 1.631.585.3300

1.800.345.4009 • info@dvimail.com • DesignsForVision.com

 @Designs4Vision